



COMMUNITY FORESTRY IN PROGRESS

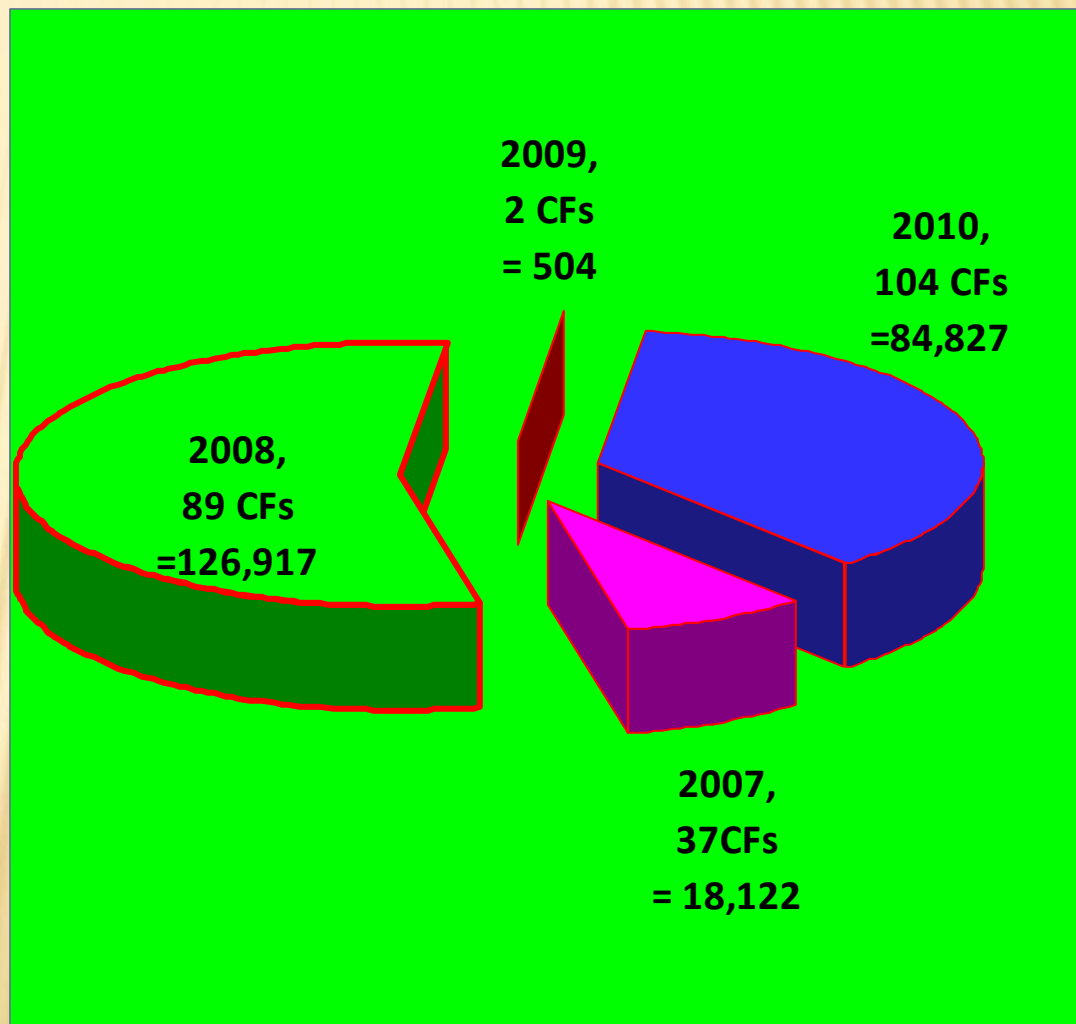
Long Ratanakoma
Dept. of Forest & CF
Forestry Administration

Achievements

- ❖ **Total CFs** : 441 CFs = 392,431 ha
- ❖ **Approved by MAFF** : 232 CFs = 230,371 Ha
- ❖ **CF Agreement** : 96 CFs = 118,642 Ha
- ❖ **Waiting in MAFF** : 119 CFs = 90,375 Ha
- ✗ **CF Statistic book** : 2,000 sets
- ✗ **Printed CF Step poster**: 2,000 sets
- ✗ **Printed CFMP poster** : 4,000 sets
- ✗ **CF database for FAC** : 3 FA cantonments

Approved by MAFF in 2010

Provinces	CFs	CF Area Ha.
Preah Vihea	18	37,063
Kg. Speu	15	5,877
Battambang	13	3,531
Kratie	11	21,558
Kg. Chhnang	10	1,204
Kg. Thom	9	7,613
Ratanakiri	9	908
Kampot	8	3,815
Kg. Cham	5	1,783
Pailin	4	858
Kep	1	60
Takeo	1	557
Total	104	84.827



CF Mapping Exercise

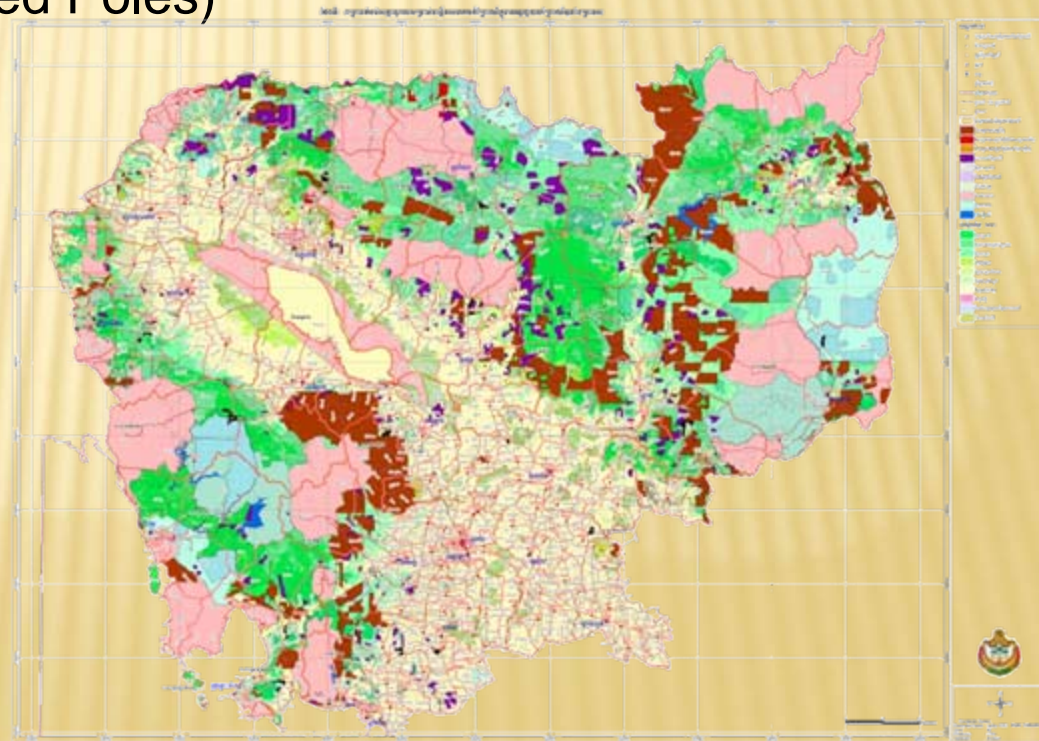
Objectives:

- ❖ Identify status and demarcate the draft CF potential areas
- ❖ Documentation CF suitable mapping and propose to MAFF.

Criteria for CF mapping

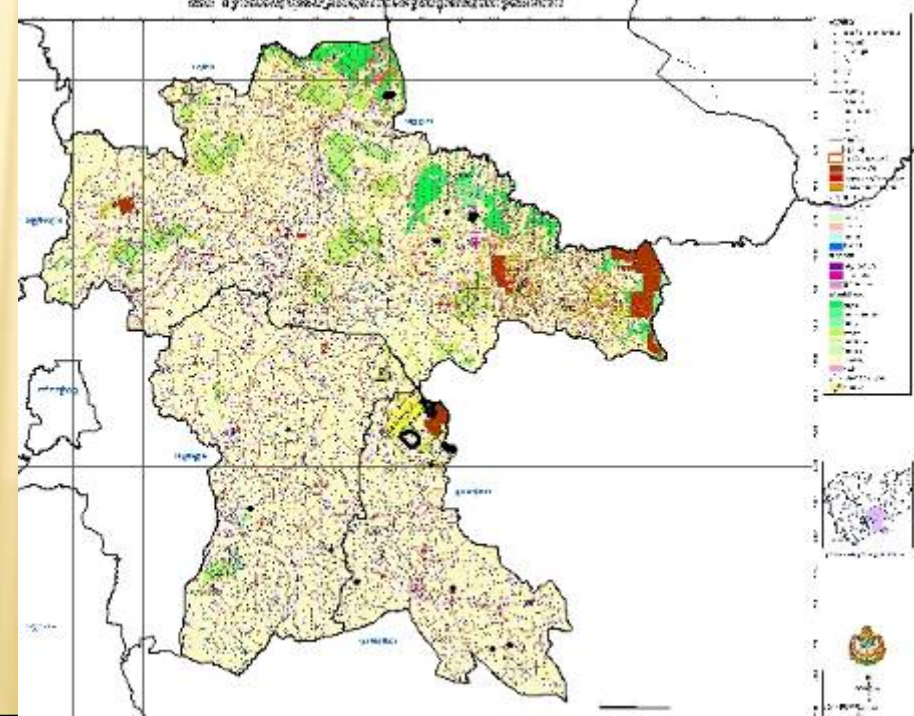
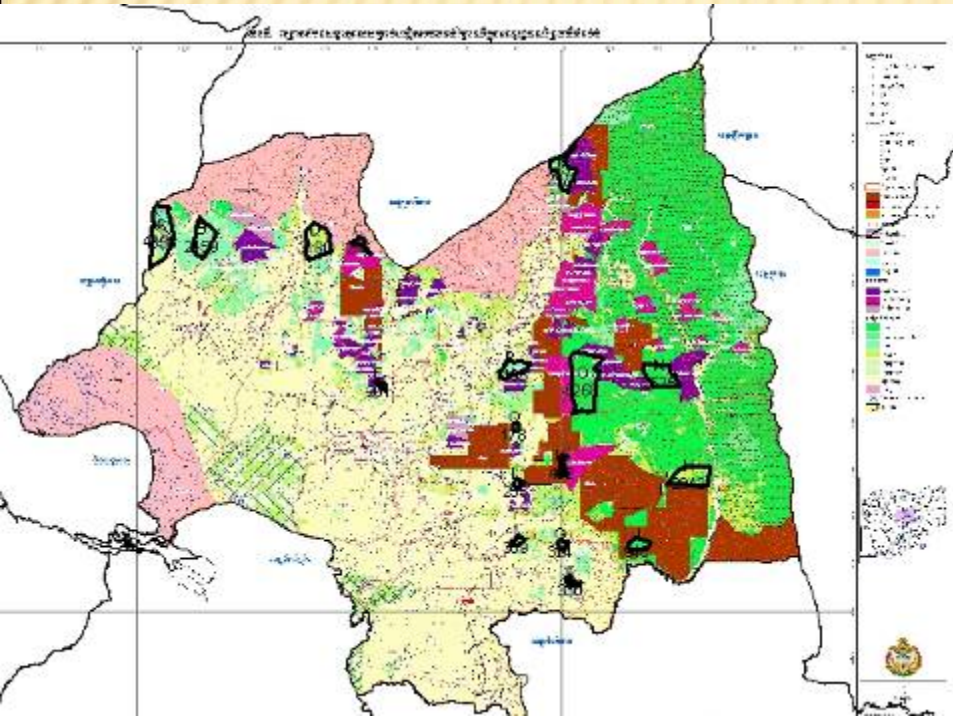
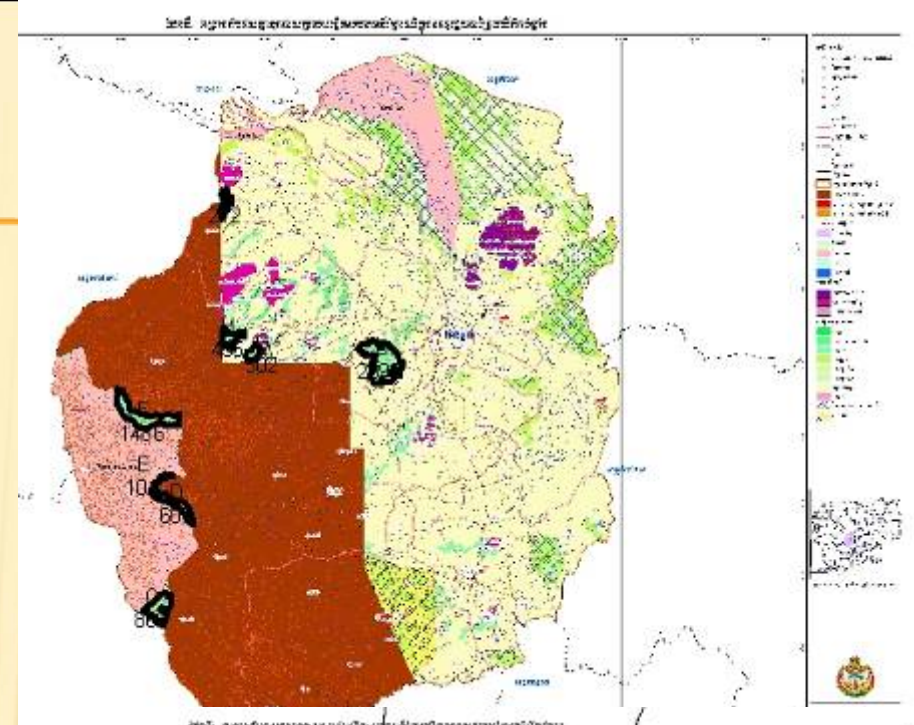
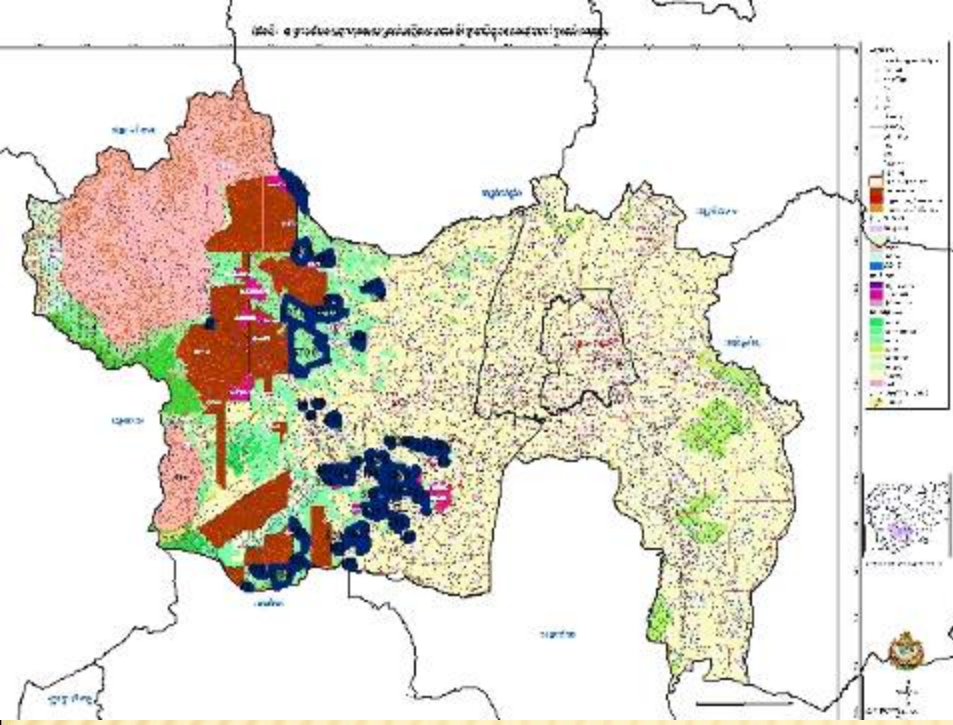
The Forest areas as below:

1. has been identified by FA Cantonment
2. has been requested by CCs and Villagers
3. has been demarcated (Installed Poles)
4. has not been demarcated
5. confiscated
6. ELC had been canceled.



Suitable Area for CF Potential

<u>N. Provinces</u>	<u>Spots</u>	<u>Forest Areas</u>	<u>Communes</u>
1. Battambang	18	38,186 Ha	18
2. Kg. Cham	15	3,258 Ha	15
3. Pursat	8	10,096 Ha	7
4. Kandal	43	28,753 Ha	25
5. Preah Vihea	8	92,725 Ha	11
6. Siem Reap	14	20,364 Ha	11
7. O. Meanchey	8	47,843 Ha	8
8. B. Meanchey	14	12,416 Ha	9
9. Kg. Thom	8	28,709 Ha	13
10. Kg. Chhnang	8	6,190 Ha	8
		144	288,540 Ha
	125		

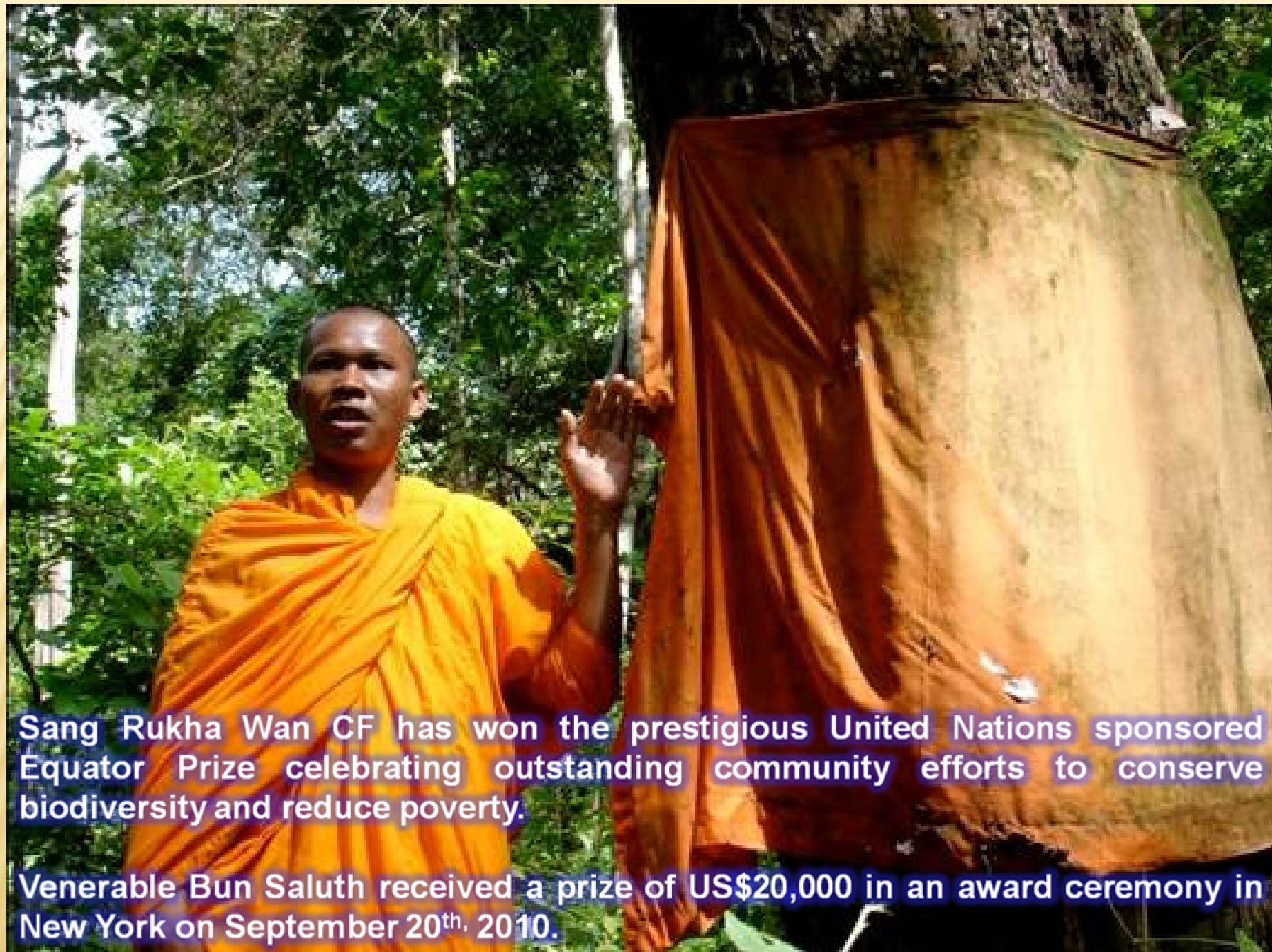


Lesson Learn

- × Stakeholders participation: FA, CC, Community
- × CF Boundary demarcation: CF Poles
- × CF recognition: approved by MAFF and CF agreement
- × Capacity Building
- × Livelihood activities

Challenges

- × **CF Potential identification**
- × **CF boundary demarcation**
- × **Stakeholder participation**
- × **Skills in the NTFPs processing and marketing**
- × **Supporting staffs in field level**
- × **Cooperation with implement partners**
- × **Identify the CF potential area**



Sang Rukha Wan CF has won the prestigious United Nations sponsored Equator Prize celebrating outstanding community efforts to conserve biodiversity and reduce poverty.

Venerable Bun Saluth received a prize of US\$20,000 in an award ceremony in New York on September 20th, 2010.